

Big I MN Enhanced E&O Solution Program

One Service Center • One Common Renewal Date • One Bill

We are excited to announce additional enhancements of our E&O Solution Program designed exclusively for Big I MN members. The Big I MN E&O Solution Program has expanded our product offering, enhanced our service center and continues to provide the highest quality of coverage for Big I MN independent agents. A member agency can now bundle the following coverages with their Big I MN E&O policy to better protect their business liability risk and manage their policies through ONE service center, ONE renewal date and ONE bill.

Swiss Re/Westport E&O Policy

Swiss Re/Westport is the largest E&O provider in the country and is designed specifically for Big I MN independent agents. Swiss Re/Westport is unique in providing credits for loss free, loss control CE education, and professionally conducted agency audits. This enables your E&O carrier to continue to be competitively priced in the marketplace. Swiss Re/Westport distinguishes itself in the E&O marketplace by offering \$25,000,000 per claim primary capacity.

Beazley Cyber Policy

The vast majority of businesses that suffer a data breach fail to recover because they did not have a plan in place to deal with a possible breach.

Responding to a breach is a complicated process that requires the assistance of many different professionals. Big I MN has partnered with Arlington/Roe & Co., Inc. to offer our members an exclusive program to help protect their agencies from information security breaches through Beazley Insurance. This program is a holistic risk management process that will help train your staff on privacy compliance in addition to handling data breach notification and third party suits.

D&O/EPL Policy

Operating a business in today's environment is challenging enough without having to worry about coverage for your Directors and Officers. Private companies, regardless of size and nature

of business, may face employment claims as well as claims from competitors, customers, suppliers, and the government. Charges against employers for discrimination, harassment, wrongful termination, retaliation, and wage-and-hour violations are at an all-time high. The legal landscape for employers continues to change with the passage of laws like the Lilly Ledbetter Fair Pay Act of 2009 and The Americans with Disability Act Amendments of 2008 and pending upcoming changes to W&H. Big I MN has partnered with Arlington/Roe & Co., Inc. to offer our members options that will specifically address these exposures.

The Big I MN E&O Solution Program is More Than Just a Policy!

Big I MN Enhanced Coverage and Member Pricing are important factors in the Big I MN Solution Program. All policies in the program are designed and priced exclusively for the Big I MN member.

Central Service Center is designed to service all the program policies with One Common Service phone # and email. The service center will also coordinate your One Bill and One Renewal Date.

Loss Control Education continues to expand the E&O educational opportunities for member agents offering a number of classes throughout the state as well as in-house loss control education. Members receive a 10% discount on their Westport E&O policy when they participate in this 3 hour continuing education program. We will be adding loss control education for all program policies and coverages.

Risk Management Specialist, John Immordino, is one of the top Professional Liability Risk

Management Specialists in the country. John will provide Big I MN E&O Solution Program members with advice throughout the year on planning and structuring their agency coverages in an effort to protect their agency business and minimize losses.

As you can see, we are moving our Big I MN E&O Solution Program in a new direction that will provide additional professional coverages and resources to better protect Big I MN member businesses.

Big I MN E&O Solution Team



Mark Shackelford
Swiss Re Corporate Solutions
Westport VP Underwriting
(856) 446-9547
Mark_Shackelford@swissre.com

Responsibilities: Swiss Re/Westport's Lead Underwriter



John Immordino, CIC, CRM, RPLU, CIPP/US, CPL
Big I MN Insurance Service Center
E&O Risk Consultant
(800) 550-9891
jimmordino@arlingtonroe.com

Responsibilities: Big I MN's Insurance Service Center Operations rector, Agency Risk Management Consultant



Andrea Bowman
Big I MN Insurance Service Center
Insurance Program Manager
(800) 550-9891
abowman@arlingtonroe.com

Responsibilities: Processing New & Renewal E&O Policies, and Cyber Liability



Ryan Wallace
Big I MN Insurance Service Center
Insurance Program Manager
(800) 550-9891
rwallace@arlingtonroe.com

Responsibilities: Processing New & Renewal E&O Policies, and Cyber Liability

Professional E&O Education Team

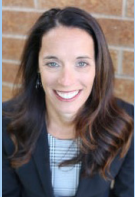
April Goodin



Big I MN
Executive VP & CEO
(763) 235-6475
agoodin@bigimn.org

April has been with the Big I MN for over 27 years serving the independent agent members throughout Minnesota. April is involved with education, membership, E&O, Event Planning, Power in Partner Program, and the board of directors. April graduated from the University of MN with a Bachelor of Science Degree.

Jessica C. Richardson, J.D.



Tomsche, Sonnesyn & Tomsche, P.A.
E&O Instructor
(612) 522-2040
jrichardson@tstlaw.com

Jessica has been defending individuals, professionals, and insurers for over 20 years. She is a graduate of Wake Forest University and University of Minnesota Law School and is licensed in both Minnesota and Wisconsin. As a shareholder at the law firm Tomsche, Sonnesyn & Tomsche, Jessica serves as legal counsel for Swiss Re and the Big I Minnesota clients and presents regularly on topics impacting insurance agents and their business. Jessica also serves as a Rule 114 Qualified Neutral.

Jean E. Sundlof, CIC, CPCU, ACI



Kraus-Anderson Insurance
E&O Instructor
(952)-707-8251
jsundlof@kainsurance.com

Jean received her BBA and MBA from the University of Oklahoma. She is also a Certified Insurance Counselor (CIC) and a Certified Property and Casualty Underwriter (CPCU). She is a faculty member of the Big I MN and the National Alliance where she instructs CIC, CISR, and E&O Loss Control Programs. Currently Jean is an agent for Kraus-Anderson Insurance in Burnsville, MN.

Sandy Eastling, CPCU, CRM, CIC, AIC, AIS, AINS, TRIP



North Risk Partners
E&O Instructor
(952) 217-9689
sandy.eastling@northriskpartners.com

Sandy has been an insurance professional for over 28 years. As faculty member of the Big I MN and the National Alliance, she is passionate about equipping others. Currently, Sandy is a Senior Claims Administrator with North Risk Partners.

Gloria J. Thompson, CIC, CPIW

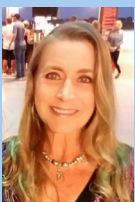


North Risk Partners
E&O Instructor
(612) 296-9636
gloriat@me.com

Gloria has over 40 years of experience in the independent agency business and is currently Risk Advisor for North Risk Partners. She is an instructor for the National Alliance, Big I MN and conducts individual classes and consulting through Independent Resource Services, LLC. She is a past board member for the National Alliance's CISR program. Gloria currently is the Education Chairperson for the Big I MN Insurance Education Foundation.

Professional E&O Claims Team

Janice Blandon, AIC



Swiss Re Corporate Solutions
Westport Claims Specialists
(856) 446-9656
Janice_Blanton@swissre.com

Janice is a graduate of Mid-America Nazarene University with a BA degree in business. Since joining Swiss Re Corporate Solutions as a Claims Specialist in 2002, Janice has handled claims for insurance agents and brokers through the transition from Employers Reinsurance Corporation to the acquisition by Swiss Re. Prior to joining the professional liability claim team she worked in the Legal Department of Westport Insurance Corporation from 1995 until 2002.

Jessica C. Richardson, J.D.



Tomsche, Sonnesyn & Tomsche, P.A.
Big I MN E&O Defense Attorney
(612) 522-2040
jrichardson@tstlaw.com

Jessica has been defending individuals, professionals, and insurers for over 20 years. She is a graduate of Wake Forest University and University of Minnesota Law School and is licensed in both Minnesota and Wisconsin. As a shareholder at the law firm Tomsche, Sonnesyn & Tomsche, Jessica serves as legal counsel for Swiss Re and the Big I Minnesota clients and presents regularly on topics impacting insurance agents and their business. Jessica also serves as a Rule 114 Qualified Neutral.

Call the E&O Solution Hotline for more details and to quote.

800-550-9891

The Big I MN E&O Solution Team thanks you for your support and business!